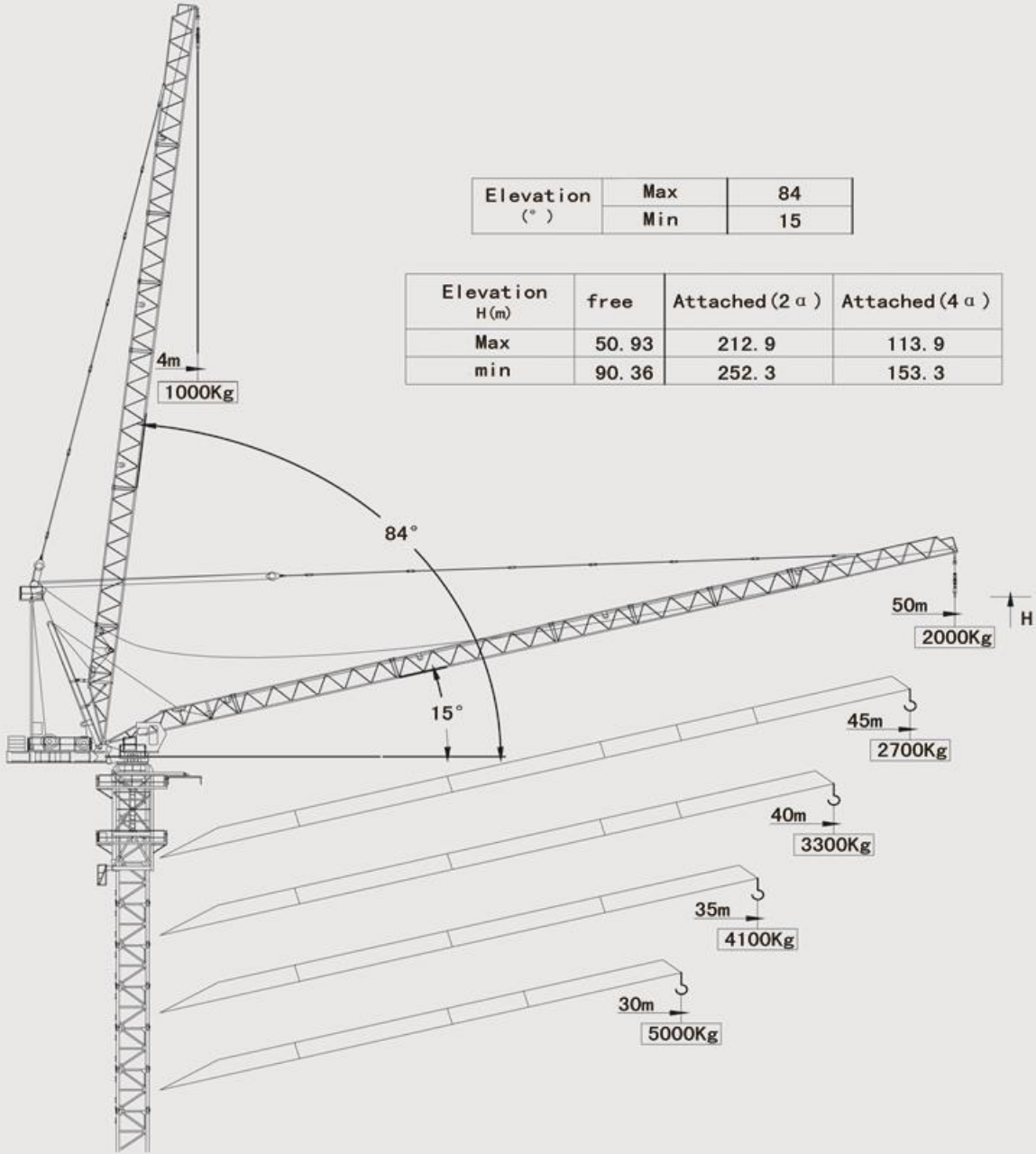


LLT 5020-10

LIFTEC LUFFING CRANE

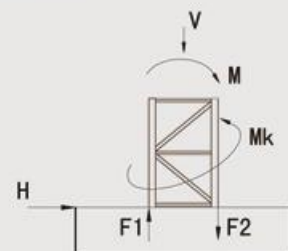


Elevation (°)	Max	84
	Min	15

Elevation H (m)	free	Attached (2 α)	Attached (4 α)
Max	50.93	212.9	113.9
min	90.36	252.3	153.3

Height under hook

V (KN)	H (KN)	M _k (KN · m)	M (KN · m)	F1 (KN)	F2 (KN)
● 689.3	● 30.3	● 1370	● 1873	● 875	● 530
■ 662.3	■ 119.8	■ 0	■ 3688	■ 1549	■ 1217
● In service		■ Out of service		F Reactions	



LLT 5020-10

LIFTEC LUFFING CRANE



Load diagrams



4-17	18	20	22	24	26	28													
10	9.3	8.1	7.2	6.4	5.7	5.1	5	4.3	3.9	3.6	3.3	3	2.8	2.5	2.3	2.2	2	2	m



4-18	20	22	24	26	28														
10		8.7	7.7	6.8	6.1	5.5	5	4.6	4.2	3.9	3.7	3.3	3	2.8	2.7				m



4-18	20	22	24	26	28														
10		8.7	7.7	6.8	6.1	5.5	5	4.6	4.2	3.9	3.7	3.3							m

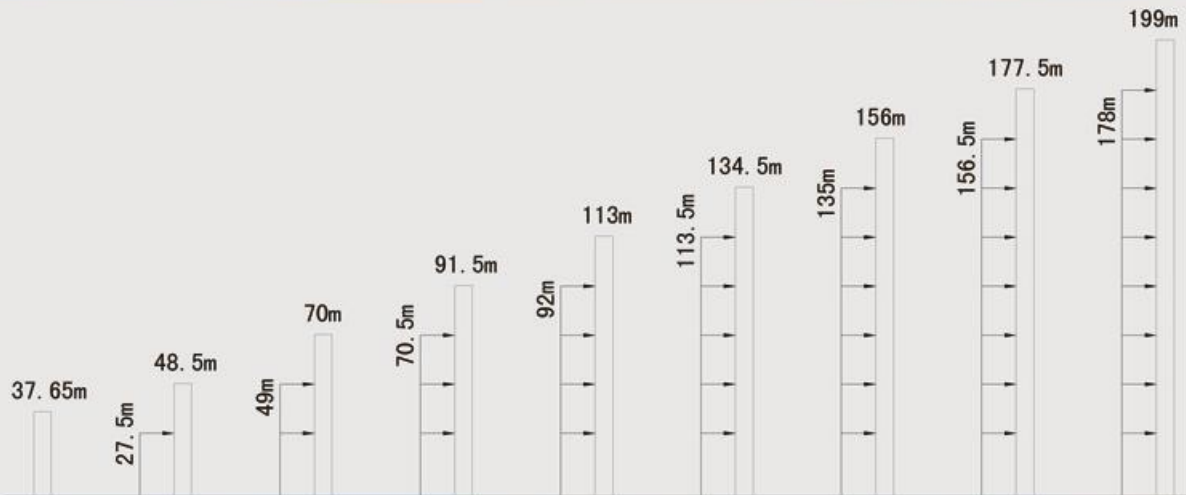


4-18	20	22	24	26	28														
10		8.7	7.7	6.8	6.1	5.5	5	4.6	4.2	4.1									m



4-18	20	22	24	26	28														
10		8.7	7.7	6.8	6.1	5.5	5												m

Anchorage



Mechanisms

Hoisting		Fall		/					
		Speed	m/min	0~40	0~80	0~20	0~40		
		Load Capacity	Weight	t	5.0	2.5	10	5.0	
		Power	KW	45					
Trolleying		Speed	m/min	0~45					
		Power	KW	37					
Slewing		Speed	r/min	0~0.62					
		Power	KW	14.5×2					
Jacking		Speed	m/min	0.55					
		Operating Pressure	MPa	35					
		Power	KW	11					
Total Power			KW	101					