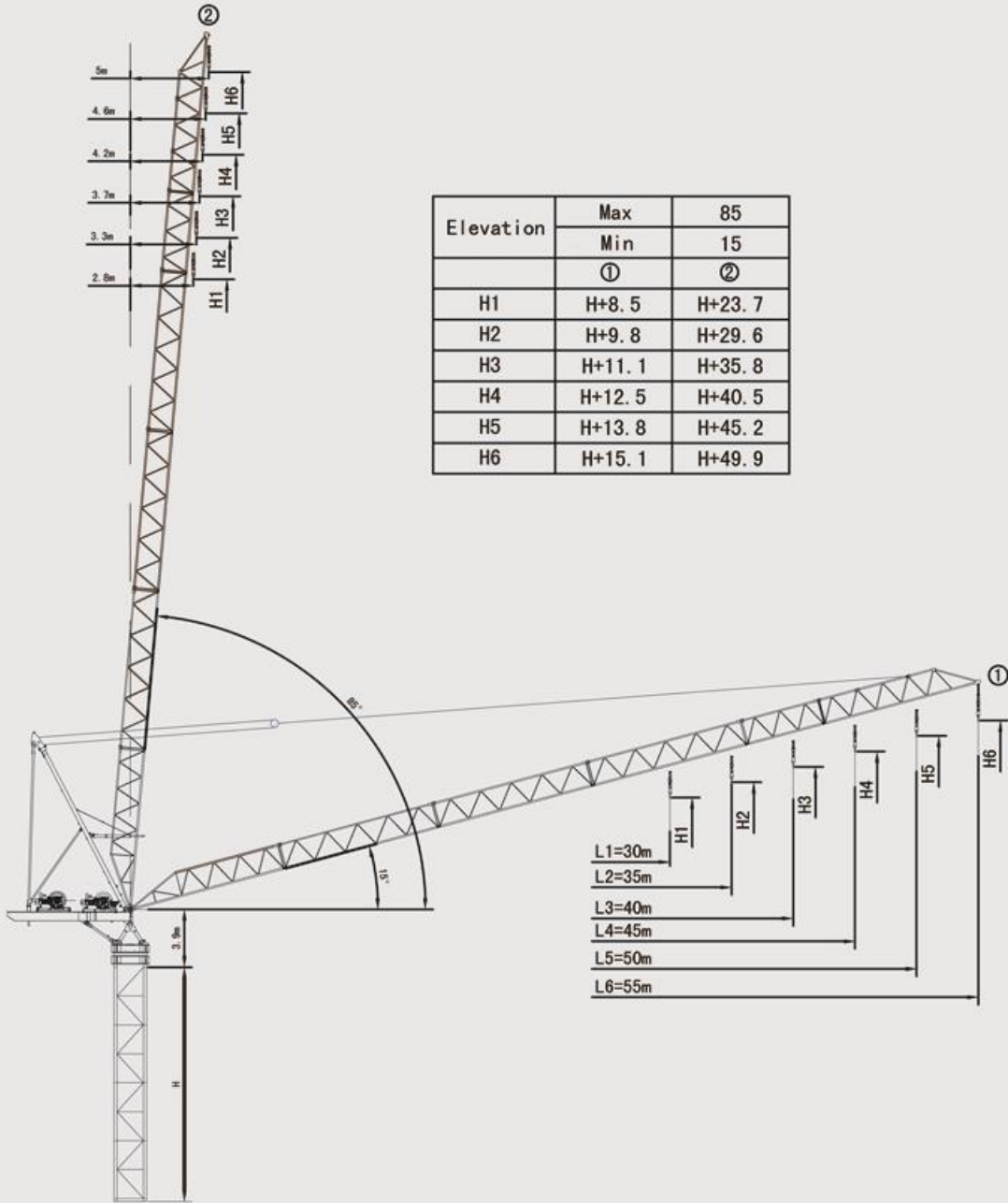


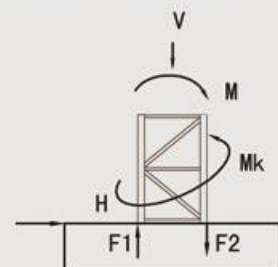
LLT 5531-18

LIFTEC LUFFING CRANE



Height under hook

V (KN)	H (KN)	Mk (KN · m)	M (KN · m)	F1 (KN)	F2 (KN)
● 2614	● 48	● 206	● 3476	● -244	● 1063
■ 2420	■ 189	■ 0	■ 5328	■ 0	■ 1256
● In service		■ Out of service of		F Reactions	



LLT 5531-18

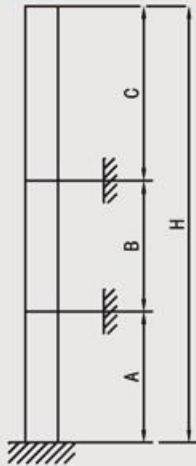
LIFTEC LUFFING CRANE



Load diagrams

R					m	15	20	25	30	35	40	45	50	55
55	9.00			27.9	t	9.00	9.00	9.00	8.12	6.54	5.36	4.44	3.70	3.10
		13.5		20.4	t	13.5	13.5	10.45	8.14	6.50	5.26	4.30	3.53	2.90
50	9.00			31.9	t	9.00	9.00	9.00	9.00	7.92	6.54	5.46	4.60	
		13.5		22.6	t	13.5	13.5	11.91	9.34	7.50	6.13	5.05	4.20	
45			18.0	17.9	t	18.0	15.76	11.91	9.34	7.50	6.13	5.05	4.20	
	9.00			32.8	t	9.00	9.00	9.00	9.00	8.28	6.88	5.80		
40		13.5		23.2	t	13.5	13.5	12.3	9.71	7.86	6.48	5.40		
			18.0	18.2	t	18.0	16.19	12.3	9.71	7.86	6.48	5.40		
35	9.00			33.7	t	9.00	9.00	9.00	9.00	8.60	7.20			
		13.5		23.7	t	13.5	13.5	12.64	10.04	8.19	6.80			
30			18.0	18.5	t	18.0	16.54	12.64	10.04	8.19	6.80			
	9.00			34.0	t	9.00	9.00	9.00	9.00	8.70				
25		13.5		23.8	t	13.5	13.5	12.7	10.13	8.30				
			18.0	18.6	t	18.0	16.55	12.7	10.13	8.30				
20	9.00			30.0	t	9.00	9.00	9.00	9.00					
		13.5		23.9	t	13.5	13.5	12.77	10.2					
15			18.0	18.7	t	18.0	16.55	12.77	10.2					

Anchorage



	L1/L2/L3	L4/L5	L6
Amin/max	25/35	25/32	25/28
Bmin/max	18/26	18/22	18/22
Cmax	29	27	25
Hmax	A+B+C		

Mechanisms

Mechanism	Icon	Parameter	Unit	Load Capacity											
Hoisting		Speed	m/min	0 [~] 37	0 [~] 54	0 [~] 77	0 [~] 130	0 [~] 24	0 [~] 37	0 [~] 51	0 [~] 86	0 [~] 18	0 [~] 27	0 [~] 37	0 [~] 65
		Load Capacity Weight	t	9.0	6.0	4.0	1.5	13.5	9.0	6.0	2.25	18.0	12.0	8.0	3.0
		Power	KW	67											
Trolleying		Speed		2.5											
		Power	KW	45											
Slewing		Speed	r/min	0-0.75											
		Power	KW	9.8 × 2											
Jacking		Speed	m/min	0.55											
		Operating Pressure	MPa	35											
		Power	KW	11											
Total Power			KW	131.6											