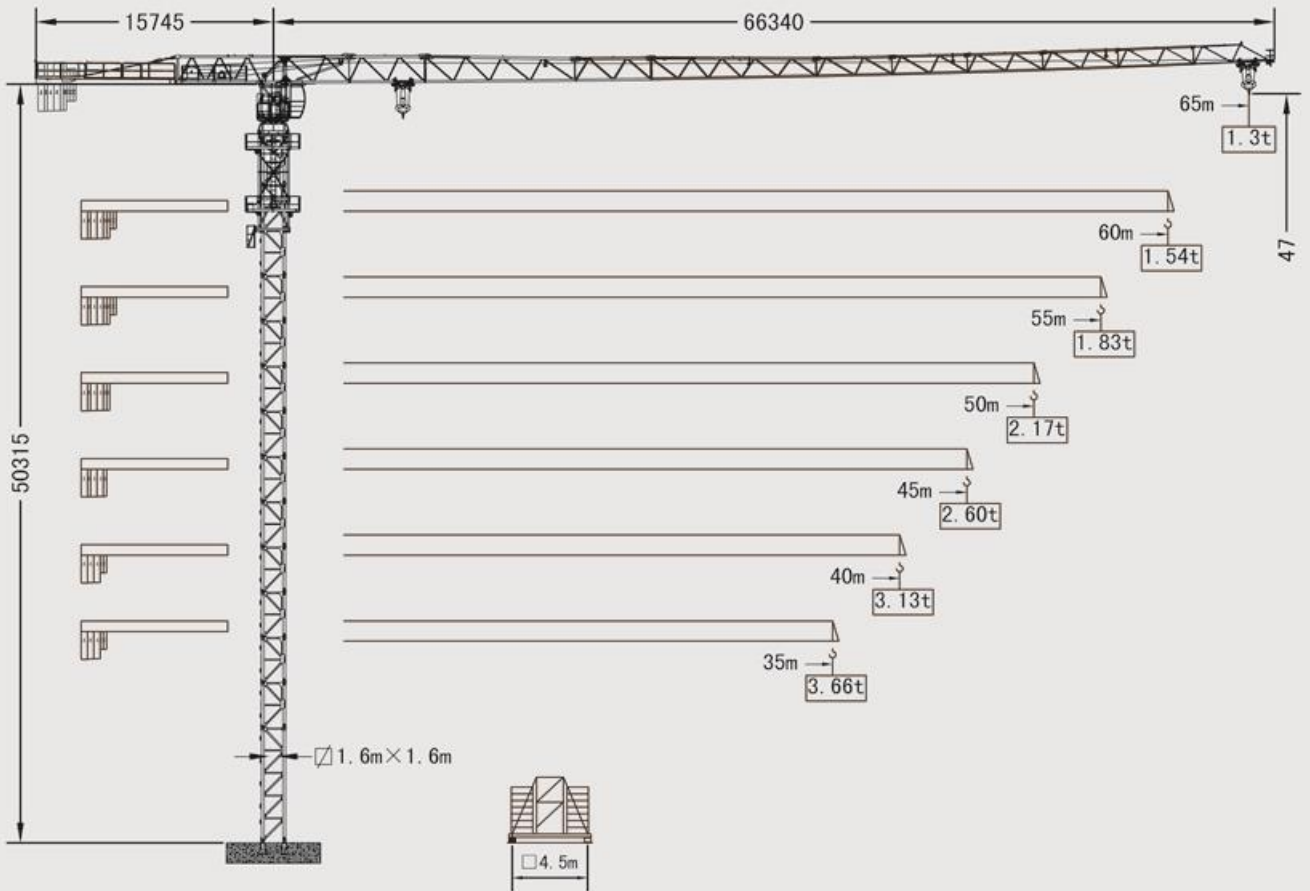


LTT 6513-8

LIFTEC TOPLESS CRANE



Blance Weight

65m	15.745m	$3A+3B+3C=16.5t$	45m	15.745m	$3A+2B=12.0t$
60m	15.745m	$3A+3B+2C=15.5t$	40m	15.745m	$3A+2C=11.0t$
55m	15.745m	$3A+3B+1C=14.5t$	35m	15.745m	$2A+1B+2C=9.5t$
50m	15.745m	$3A+3B=13.5t$	● A=3.0t B=1.5t C=1.0t		

Foundation Load

V (KN)	H (KN)	Mk (KN · m)	M (KN · m)	F1 (KN)	F2 (KN)
● 686	● 37	● 199	● 1573	● 570	● 914
■ 606	■ 91	■ 0	■ 2225	■ 898	■ 1201
● In service		■ Out of service		F Reactions	

