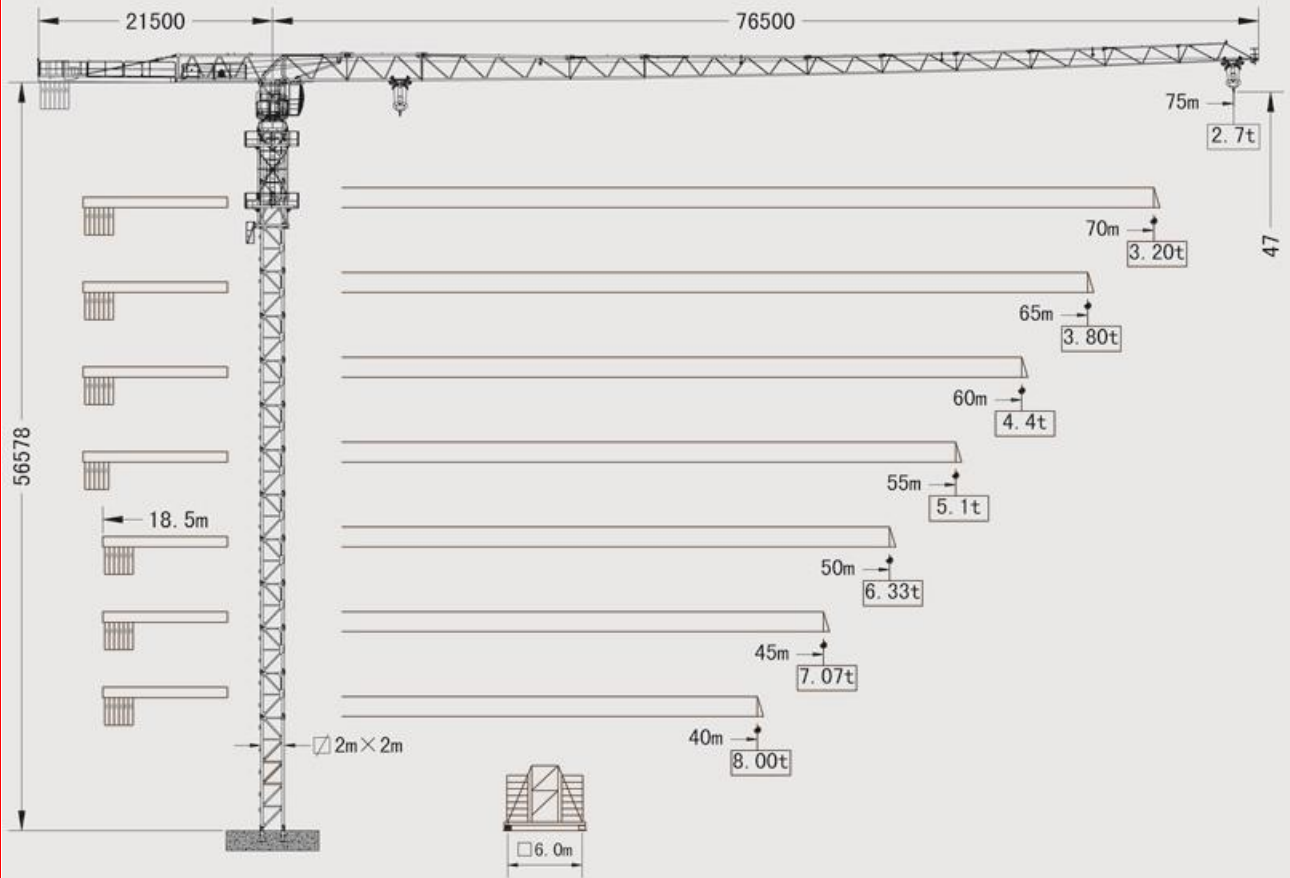


LTT 7525-16

LIFTEC TOPLESS CRANE

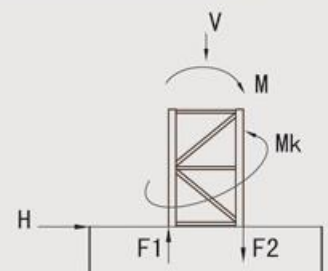


Blance Weight

75m	21.5m	5A+1B=22.0t	50m	18.5m	6A+0B=23.4t
70m	21.5m	5A+1B=22.0t	45m	18.5m	5A+1B=22.0t
65m	21.5m	5A+1B=22.0t	40m	18.5m	4A+2B=20.6t
60m	21.5m	4A+2B=20.6t			
55m	21.5m	5A+0B=19.5t	●	A=3.9t B=2.5t	

Foundation Load

V (KN)	H (KN)	Mk (KN · m)	M (KN · m)	F1 (KN)	F2 (KN)
● 1168	● 45	● 397	● 2919	● 802	● 1386
■ 952	■ 179	■ 0	■ 3768	■ 1175	■ 1651
● In service		■ Out of service		F Reactions	

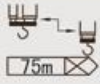


LTT 7525-16

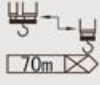
LIFTEC TOPLESS CRANE



Load Diagrams



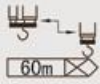
3-14.9	15	20	25	27.9															
75m					30	35	40	45	50	55	60	65	70	75	m				
	16.0	15.9	11.5	8.92	7.72	7.46	6.26	5.37	4.68	4.13	3.68	3.31	3.0	2.85	2.7	t			



3-16.5	20	25	30	31.3															
70m					35	40	45	50	55	60	65	70	m						
	16.0	12.9	10.0	8.2	7.72	7.16	6.16	5.38	4.77	4.27	3.85	3.5	3.2	t					



3-17.7	20	25	30	33.3															
65m					35	40	45	50	55	60	65	m							
	16.0	14.1	11.0	8.94	7.72	7.68	6.62	5.80	5.15	4.61	4.17	3.8	t						



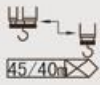
3-18.5	20	25	30	34.9															
60m					35	40	45	50	55	60	m								
	16.0	14.8	11.5	9.4	7.72	7.9	6.96	6.1	5.42	4.86	4.4	t							



3-19.3	20	25	30	35	36.4														
55m						40	45	50	55	m									
	16.0	15.5	12.1	9.84	8.27	7.72	7.3	6.39	5.68	5.1	t								

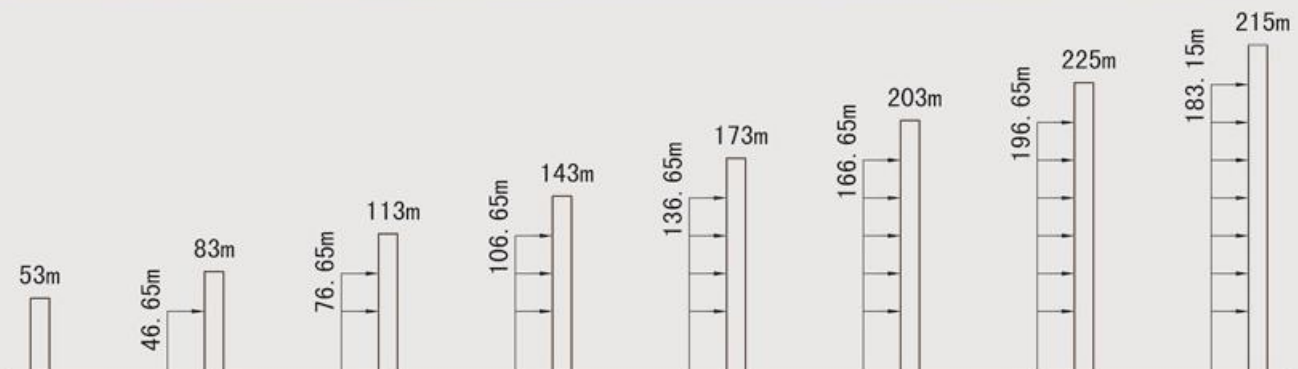


3-20.6	25	30	35	40															
50m					45	50	m												
	16.0	13.0	10.7	9.0	7.78	7.07	6.33	t											



3-20.6	25	30	35	40															
45/40m					45	m													
	16.0	13.0	10.7	9.0	7.78	7.07	t												

Anchorage



Mechanisms

Hoisting		Fall	/				
		Speed	m/min	0-40	0-80	0-20	0-40
Load Capacity Weight	t	8	4	16	8		
Power	KW	55					
Trolleying		Speed	m/min	0~50			
		Power	KW	11			
Slewing		Speed	r/min	0~0.7			
		Power	KW	7.5×3			
Jacking		Speed	m/min	0.45			
		Operating Pressure	MPa	25			
		Power	KW	7.5			
Total Power			KW	88.5			