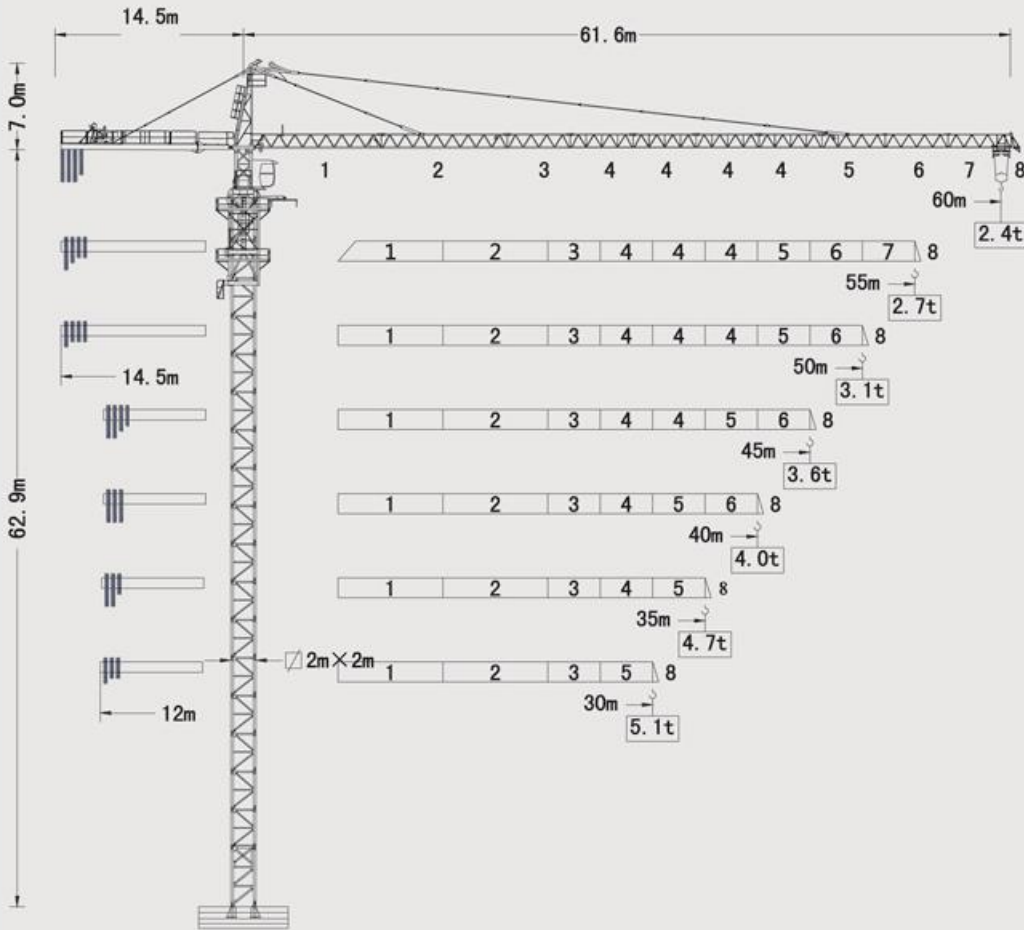


LTT 6024-10

LIFTEC TOPKIT CRANE

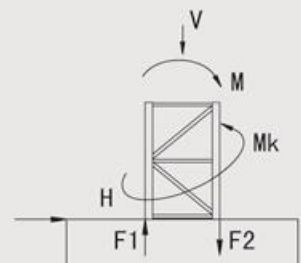


Blance Weight

60m	14.5m	$3A+1B=18.6t$	40m	12m	$3A=14.4t$
55m	14.5m	$1A+1B+2C=15.8t$	35m	12m	$2A+1C=13.0t$
50m	14.5m	$1B+3C=14.4t$	30m	12m	$1B+2C=11.0t$
45m	12m	$2A+1B+1C=17.2t$	● A=4.8t B=4.2t C=3.4t		

Foundation Load

V (KN)	H (KN)	Mk (KN · m)	M (KN · m)	F1 (KN)	F2 (KN)
● 801	● 43	● 176	● 2672	● 801	● 1252
■ 721	■ 153	■ 0	■ 4380	■ 1482	■ 1884
● In service		■ Out of service		F Reactions	

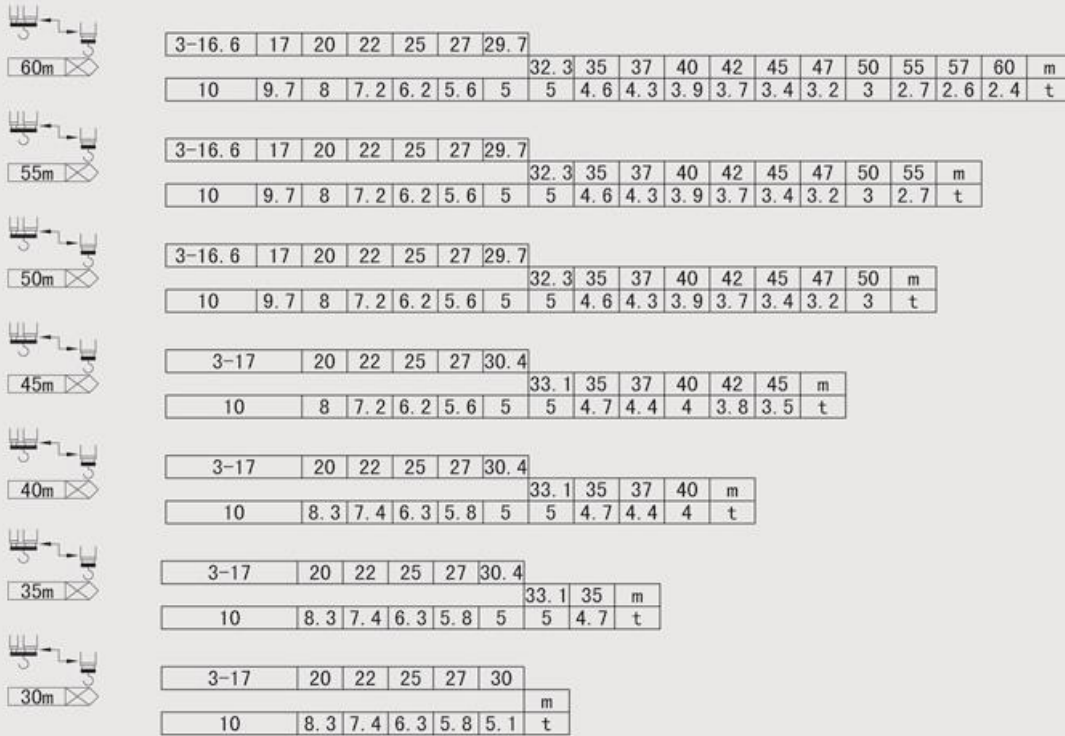


LTT 6024-10

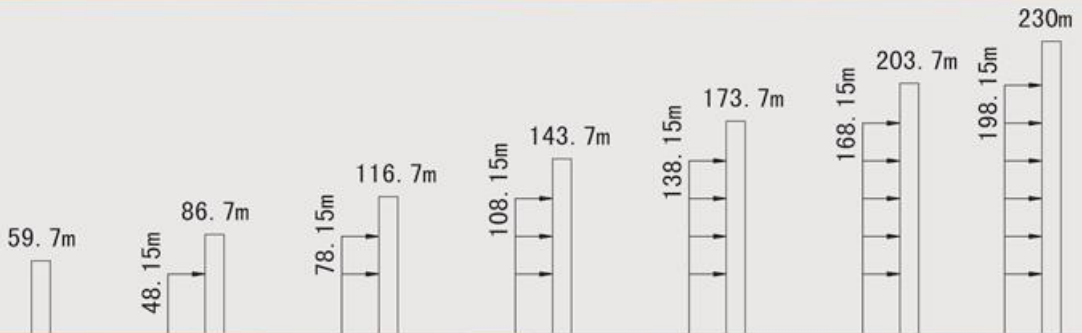


LIFTEC TOPKIT CRANE

Load Diagrams



Anchorage



Mechanisms

Hoisting		Fall	/											
		Speed	m/min	4	16	40	72	90	2	8	20	36	45	
		Load Capacity	t	5	5	5	2.5	1.5	10	10	10	5	3	
		Power	KW	45										
Trolleying		Speed	m/min	0~63										
		Power	KW	5.5										
Slewing		Speed	r/min	0~0.7										
		Power	KW	5.5×2										
Jacking		Speed	m/min	0.55										
		Operating Pressure	MPa	35										
		Power	KW	11										
Total Power			KW	61.5										