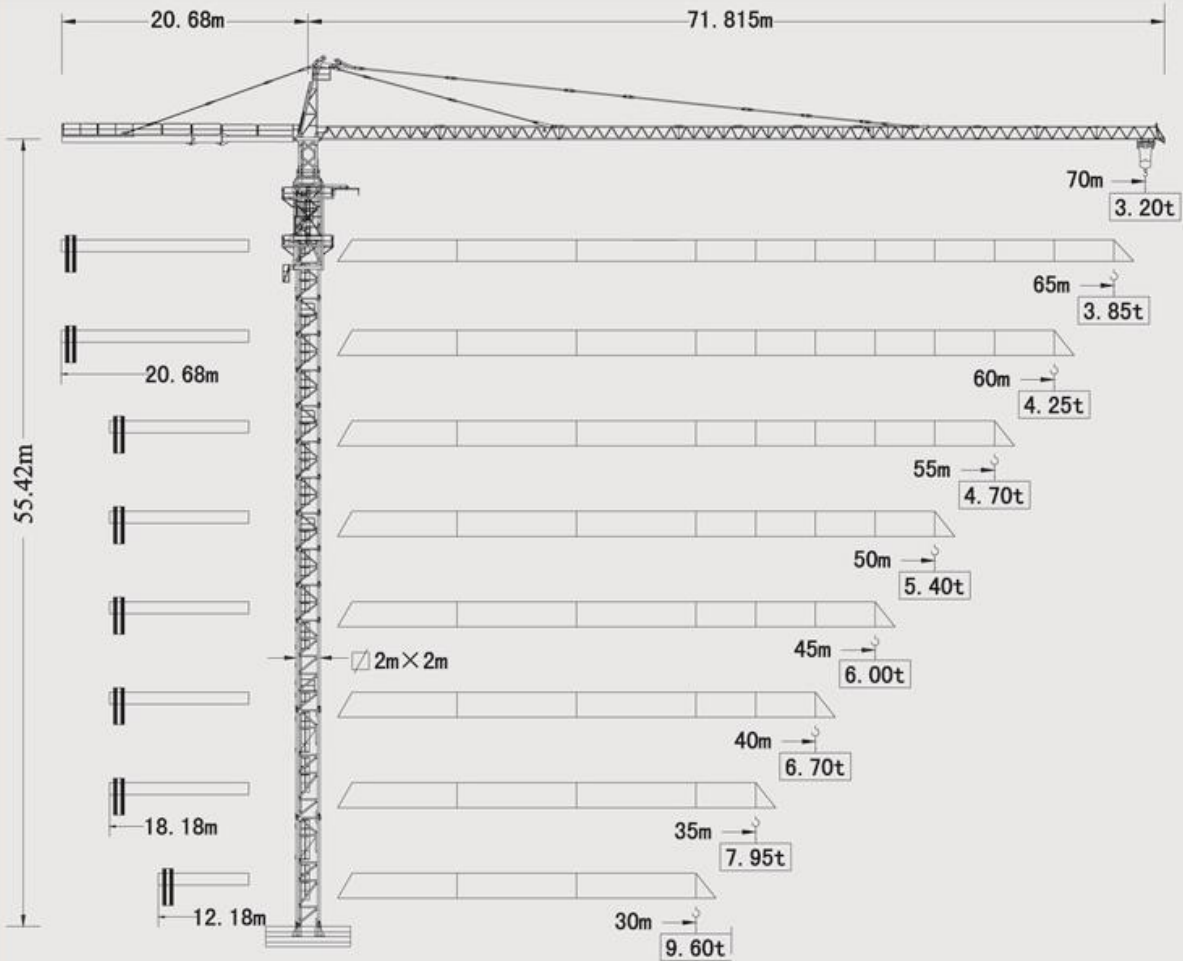


LTT 7032-12

LIFTEC TOPKIT CRANE

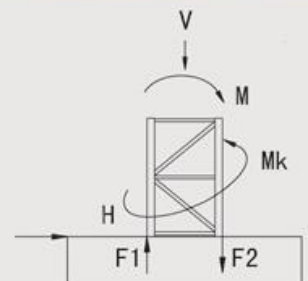


Blance Weight

70m	20.68m	5CA+P+5CB=24862kg	45m	18.18m	5CA+P+3CB=19262kg
65m	20.68m	5CA+P+4CB=24162kg	40m	18.18m	4CA+P+0CB=17162kg
60m	20.68m	5CA+P+1CB=22062kg	35m	18.18m	3CA+P+2CB=14362kg
55m	18.18m	5CA+P+5CB=24862kg	30m	12.18m	4CA+P+5CB=20662kg
50m	18.18m	5CA+P+2CB=22762kg	● P=362kg CA=4200kg CB=700kg		

Foundation Load

V (KN)	H (KN)	Mk (KN · m)	M (KN · m)	F1 (KN)	F2 (KN)
● 1159	● 45	● 279	● 2833	● 798	● 1378
■ 1039	■ 156	■ 0	■ 3244	■ 986	■ 1506
● In service		■ Out of service		F Reactions	

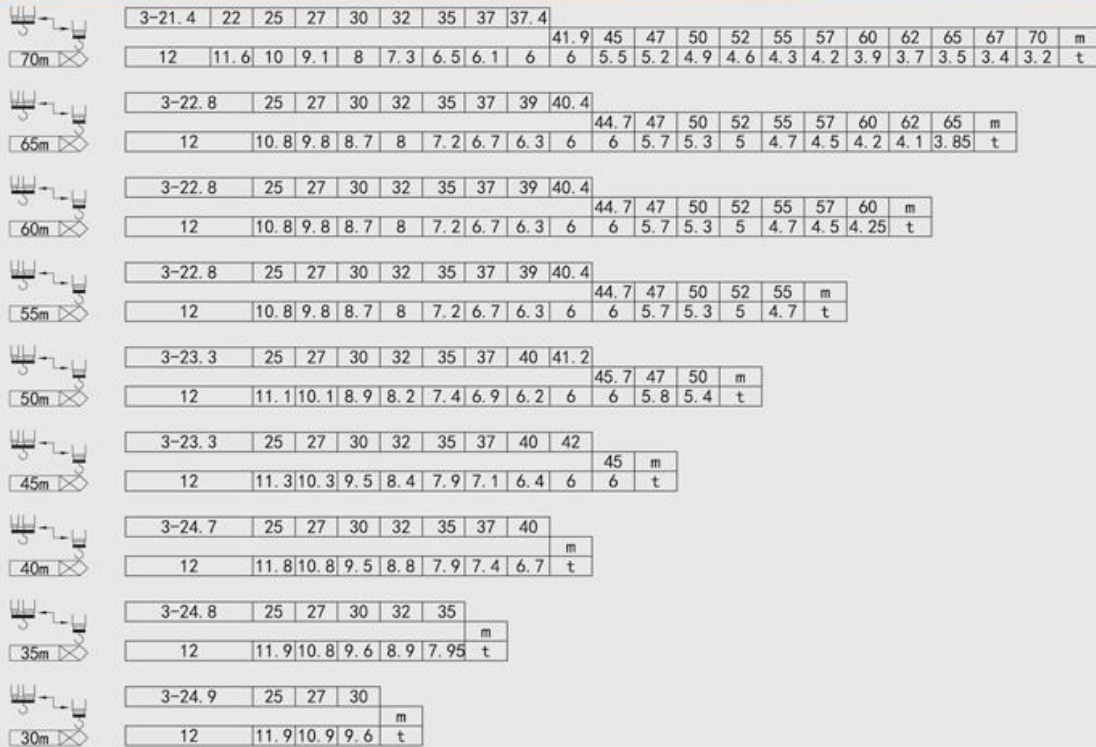


LTT 7032-12

LIFTEC TOPKIT CRANE



Load Diagrams



Anchorage



Mechanisms

Hoisting		Fall	/				
		Speed	m/min	0~45	0~90	0~22.5	0~45
		Load Capacity Weight	t	6.0	3.0	12	6.0
		Power	KW	55			
Trolleying		Speed	m/min	0~63			
		Power	KW	5.5			
Slewing		Speed	r/min	0~0.7			
		Power	KW	7.5×2			
Jacking		Speed	m/min	0.55			
		Operating Pressure	MPa	35			
		Power	KW	11			
Total Power			KW	75.5			